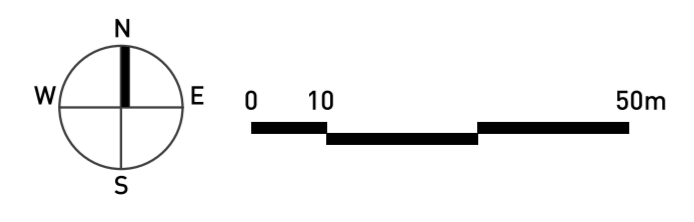




**KEY**

- POLICY COMPLIANT GARDENS
- GARDENS EXCEED MINIMUM POLICY SIZES
- GARDENS UNDER MINIMUM POLICY SIZES

NOTE: No gardens have been specified that do not meet minimum gardens sizes



ISSUE FOR INFORMATION ONLY

LAND EAST OF ASHINGDON ROAD, ROCHFORD - PHASE 2 & 3 GARDEN SIZES PLAN